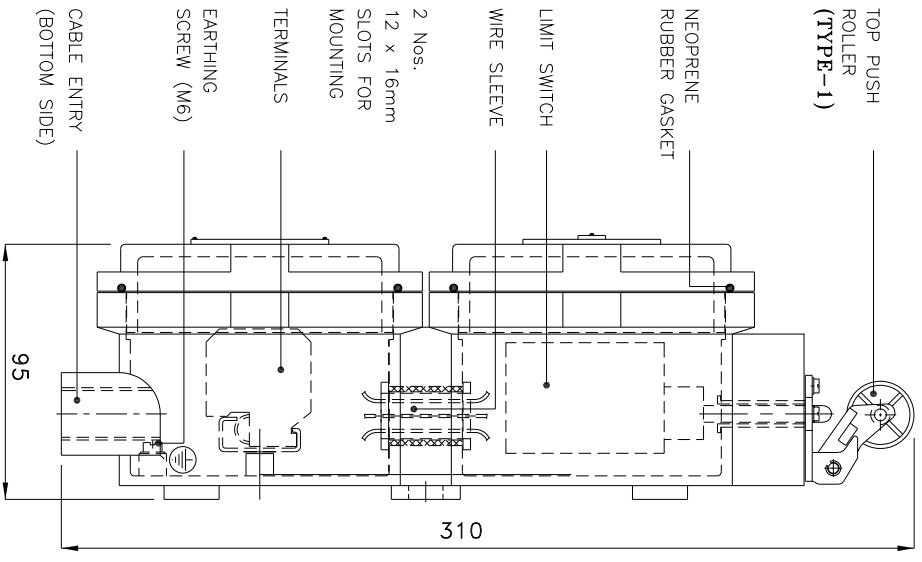


FRONT VIEW



SIDE VIEW

Fitting OPTIONS :

- 1) MATERIAL CONSTRUCTION : STAINLESS STEEL
- 2) VOLTAGE : 110V / 230V / 415V AC
- 3) CABLE GLAND & PLUG : BRASS/S.S./ALUMINIUM
- 4) PAINT SHADE : 632/356/7031/7032, etc... (As per Standard)
- 5) AMP. RATING : UP TO 10 Amp. (MAX.)

TOP PUSH ROLLER (TYPE-1)

NEOPRENE RUBBER GASKET

LIMIT SWITCH WIRE SLEEVE

2 Nos. 12 x 16mm SLOTS FOR MOUNTING

TERMINALS EARTHING SCREW (M6)

CABLE ENTRY (BOTTOM SIDE)

Reference IS/IEC Standard as follows :

- 1 - FLAMEPROOF (Ex d) PROTECTION - IIA/IIb & IIC, IS/IEC 60079-1 (2014)
- TEMPERATURE CLASS - T6
- 2 - INGRESS (IP) PROTECTION - IP-66, IS/IEC 60529 (2001). (Reaffirmed 2014)

Standard Specification :

- 1 - MATERIAL - CAST ALUMINIUM ALLOY
- 2 - FINISH - INSIDE & OUTSIDE LIGHT GREY EPOXY POWDER COATING SHADE No. 631 AS PER IS-5
- 3 - EARTHING - 1 No. INSIDE & 2 Nos. OUTSIDE M6 SIZE S.S./BRASS SCREWS WITH 2 Nos. PLAIN WASHER
- 4 - HARDWARE - STAINLESS STEEL
- 5 - GASKET - 'O' RING NEOPRENE RUBBER GASKET
- 6 - MOUNTING ARRGT. - AS SHOWN IN DRG.

Material / Components Specification :

- 1 - S.S. NAME CUM WARNING PLATE (WITH DESCRIPTION TITLE, CIMFR, PESO, SR. NO., GAS GROUP, RATING, BIS MARKING, WARNING STATUS, etc...)
- 2 - LIMIT SWITCH - 1 No. 10 Amp., 415V AC 1NO + 1NC LIMIT SWITCH ELEMENT SNAP ACTION TYPE OF 'AVON/SIEMENS' MAKE.
- 3 - TERMINALS - 4 Nos. 2.5sq. mm CLIP-ON TYPE TERMINALS OF 'ELMEX/CONNECTWELL' MAKE
- 4 - CABLE ENTRIES - 2 Nos. M20 / 1/2" NPT / 3/4" ET EQUIVALENT CABLE ENTRIES FROM BOTTOM SIDE - REFER DRAWING
- 5 - CABLE GLAND - (Ex d) DOUBLE COMPRESSION TYPE CABLE GLAND OF 'SUDHIR' MAKE
- 6 - STOPPING PLUG - (Ex d) STOPPING PLUG OF 'SUDHIR' MAKE

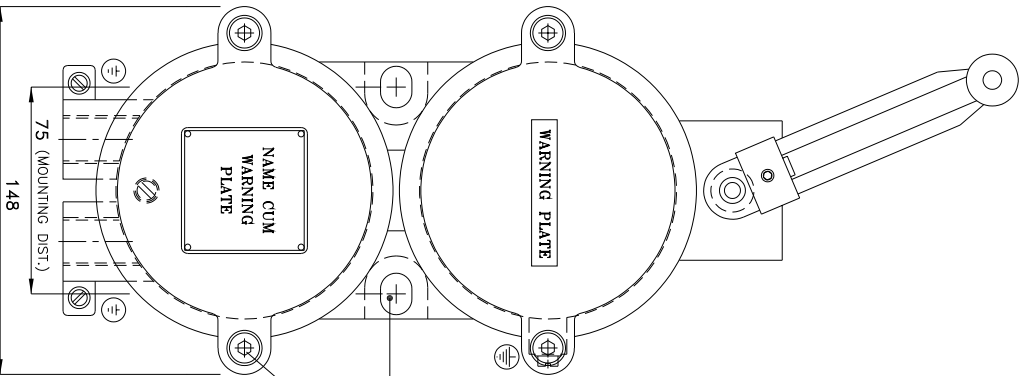
THIS DRAWING IS PROPERTY OF "SUDHIR SWITCHGEARS PVT. LTD." AND MUST BE RETURNED ON REQUEST IF IT IS SUBMITTED AS CONFIDENTIAL INFORMATION IN CONNECTION WITH ENQUIRY, TENDER, ORDER, OR CONTRACTS IT IS NOT TO BE USED FOR ANY OTHER PURPOSE OR ORDER NOR MAY IT RE-COPIED OR LENT WITHOUT OUR AUTHORITY IN WRITING.

NOTE :
 COMPONENT LAYOUT IS TENTATIVE RELOCATION OF PARTS & COMPONENTS IS POSSIBLE AT THE TIME OF ACTUAL MANUFACTURING.
 OVERALL DIMENSIONS ARE ±10mm

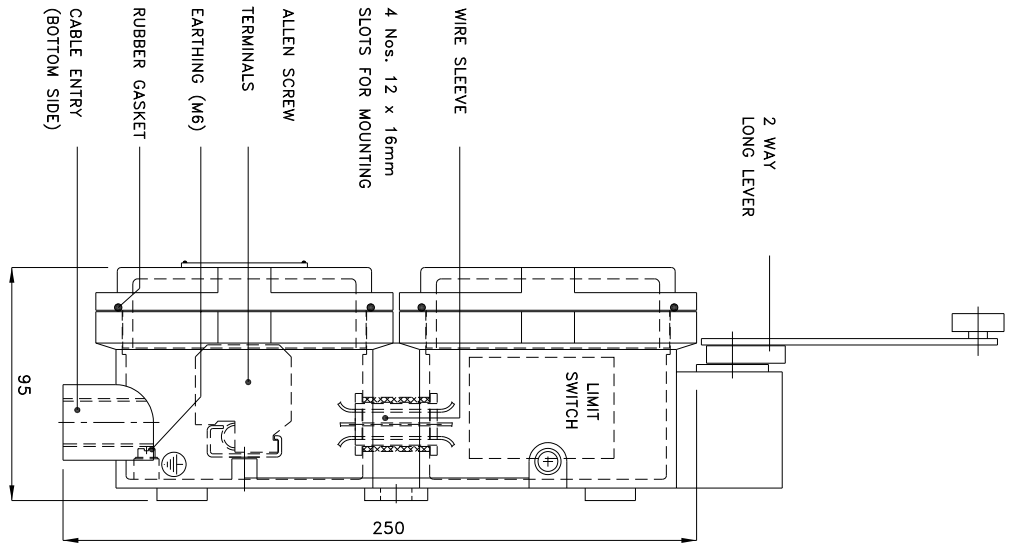
REV.	DATE	DESCRIPTION	DRN.	CHD.	APPD.	SCALE	CAT. No. LS/20/2021	MODEL No.: LS/2021-8	DRN. profill	CHKD. JASJAY	CIMFR CERT. No. IN/CIMFR/TR22/R/H03	PESO No. : P537979/1	BIS LICENCE No. : CM/L-000331365
											Dt. 01/04/2022	Dt. 02/06/2022	

SUDHIR SWITCHGEARS PVT. LTD.
 130, MULBARI SAMACHAR MARG, MULBARI - 400 023

FLAMEPROOF - WEATHERPROOF ENCLOSURE FOR LIMIT SWITCH (TOP PUSH ROLLER)



FRONT VIEW



SIDE VIEW

Fitting OPTIONS :

- 1) MATERIAL CONSTRUCTION : STAINLESS STEEL
- 2) VOLTAGE : 110V / 230V / 415V AC
- 3) CABLE GLAND & PLUG : BRASS/S.S./ALUMINIUM
- 4) PAINT SHADE : 632/355/7031/7032, etc... (As per Standard)
- 5) AMP. RATING : UPTO 10 Amp. (MAX.)

- Reference IS/IEC Standard as follows :**
- 1 - FLAMEPROOF (Ex d) PROTECTION - IIA/IB & IIC, IS/IEC 60079-1 (2014)
 - TEMPERATURE CLASS - T6
 - 2 - INGRESS (IP) PROTECTION - IP-66, IS/IEC 60529 (2001). (Reaffirmed 2014)

Standard Specification :

- 1 - MATERIAL - CAST ALUMINIUM ALLOY
- 2 - FINISH - INSIDE & OUTSIDE LIGHT GREY EPOXY POWDER COATING SHADE No. 631 AS PER IS-5
- 3 - EARTHING - 1 No. INSIDE & 2 Nos. OUTSIDE M6 SIZE S.S./BRASS SCREWS WITH 2 Nos. PLAIN WASHER
- 4 - HARDWARE - STAINLESS STEEL
- 5 - GASKET - 'O' RING NEOPRENE RUBBER GASKET
- 6 - MOUNTING ARRGT. - AS SHOWN IN DRG.

Material / Components Specification :

- 1 - S.S. NAME CUM WARNING PLATE (WITH DESCRIPTION TITLE, CIMFR, PESO, SR. NO., GAS GROUP, RATING, BIS MARKING, WARNING STATUS, etc...)
- 2 - LIMIT SWITCH - 1 No. 10 Amp., 415V AC 1NO + 1NC LIMIT SWITCH ELEMENT SNAP ACTION TYPE OF 'AVON/SIEMENS' MAKE.
- 3 - TERMINALS - 4 Nos. 2.5sq. mm CLIP-ON TYPE TERMINALS OF 'ELMEX/CONNECTWELL' MAKE
- 4 - CABLE ENTRIES - 2 Nos. M20 / 1/2" NPT / 3/4" ET EQUIVALENT CABLE ENTRIES FROM BOTTOM SIDE - REFER DRAWING
- 5 - CABLE GLAND - (Ex d) DOUBLE COMPRESSION TYPE CABLE GLAND OF 'SUDHIR' MAKE
- 6 - STOPPING PLUG - (Ex d) STOPPING PLUG OF 'SUDHIR' MAKE

Page No. : 113

THIS DRAWING IS PROPERTY OF "SUDHIR SWITCHGEARS PVT. LTD." AND MUST BE RETURNED ON REQUEST IF IT IS SUBMITTED AS CONFIDENTIAL INFORMATION IN CONNECTION WITH ENQUIRY, TENDER, ORDER, OR CONTRACTS IT IS NOT TO BE USED FOR ANY OTHER PURPOSE OR ORDER NOR MAY IT RE-COPIED OR LENT WITHOUT OUR AUTHORITY IN WRITING.

NOTE :
 COMPONENT LAYOUT IS TENTATIVE RELOCATION OF PARTS & COMPONENTS IS POSSIBLE AT THE TIME OF ACTUAL MANUFACTURING.
 OVERALL DIMENSIONS ARE ±10mm

CAT. No. LS/20/2021		SUDHIR SWITCHGEARS PVT. LTD. 130, MALLA SAIKUPPA MARG, MALLA - 400 023	
MODEL No.: LS/2021-9		TITLE : FLAMEPROOF-WEATHERPROOF ENCLOSURE FOR LIMIT SWITCH (2 WAY LONG LEVER)	
DNR. . . .	CHKD. JASHW. . . .	QMR. CERT. No. IN/CIMFR/TR22/R/H03 Dt. 01/04/2022	PESO No. : P537979/1 Dt. 02/06/2022
DRN. . . .	APPD. . . .	SHEET 1 OF 1	BIS LICENCE No. : CW/L-000331365
REV. . . .	DATE . . .	DESCRIPTION . . .	DRN. . . .